

IBM MQ V901 Continuous Delivery Release



November 2016
Announce: 15th Nov
eGA: 18th Nov, zGA 9th Dec

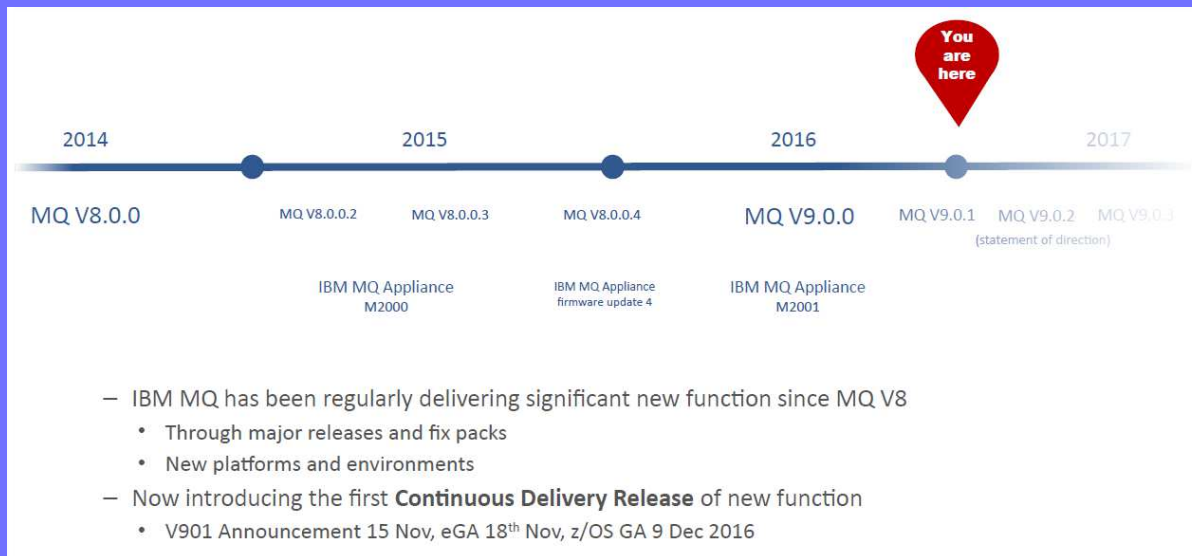
Extrait du document IBM 2016MQV901Update

Luc-Michel Demey
Demey® Consulting
lmd@demey-consulting.fr

Agenda

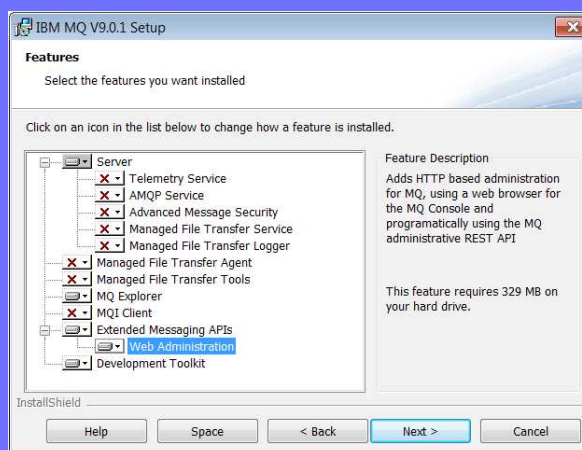
- IBM MQ Console
- Administrative REST API
- MFT Enhancements
- AMS Performance
- z/OS Connect Service Provider
- JMS for CICS Liberty

IBM MQ Deliveries

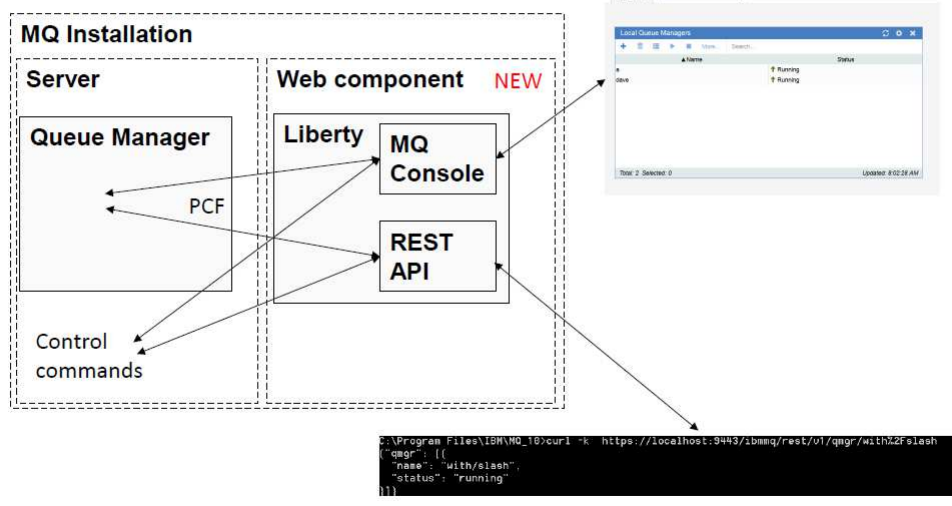


IBM MQ Console

- New, optional, installable component
- Contains MQ Console, MQ Administrative REST API and their prereqs
 - WebSphere Liberty Profile



A picture tells a 1000 words



The mqweb server

- The MQ Console and REST API are applications that run in a
- WebSphere Liberty Profile (WLP) server called mqweb
 - WLP is provided as part of MQ install
 - mqweb server definition provided out of the box when installing the webcomponent
- Out of the box:
 - MQ Console is enabled
 - REST API is disabled
 - HTTPS only, on localhost only
 - Locked down, users need to be defined in order to login

Configuring mqweb server

- Currently done by editing xml (standard WLP approach)
 - File called mqwebuser.xml provided in MQ data directory
 - This is the only part of the WLP configuration that we support customers editing :

```

<!-- Sample mqwebuser.xml file, included by server.xml, to contain user
--> configuration for the mqweb server.
-->
<server>
  <featureManager>
    <feature>appSecurity-2.0</feature>
  </featureManager>
  <basicRegistry id="basic" realm="defaultRealm">
<!-- Default configuration allows no user access, refer to the IBM Knowledge Center
--> section on "IBM MQ Console and REST API security" for details of how
--> to configure security.
-->
  </basicRegistry>
</server>

```

Configuring mqweb server

- Before use need to allow users to log in
 - Select user registry: basic, LDAP, SAF
 - Samples of first two provided
 - Define users and groups
 - Assign to roles
 - MQWebAdmin - runs as member of mqm group: read/write access
 - MQWebAdminRO - runs as member of mqm group: read-only access
 - MQWebUser – access allowed as per OAM/RACF
- Usually also need to consider
 - TLS configuration
 - Self signed certificates automatically defined
 - HTTPS port
 - Defaults to 9443
- Hostname
 - Defaults to local host only

Managing mqweb server - distributed

- Three new control commands
 - All build on WLP server command

- strmqweb

```
C:\Program Files\IBM\MQ_10\bin>strmqweb
Starting server mqweb.
Server mqweb started.
```

- endmqweb

```
C:\Program Files\IBM\MQ_10\bin>endmqweb.bat
Stopping server mqweb.
Server mqweb stopped.
```

- dspmqweb

```
C:\Program Files\IBM\MQ_10\bin>dspmqweb.bat
Server mqweb is running.
URLs:
  https://localhost:9443/ibmmq/console/
  https://localhost:9443/ibmmq/rest/v1/
```

MQ Console

- Browser based interface for administering and managing MQ
 - No client side install needed
- Common capability across Appliance and software MQ
 - Re-engineered on AngularJS so different browser code than on 8.0.0.* Appliance
 - Functional parity with MQ Console in 8.0.0.* Appliance
- Some capabilities currently restricted on z/OS
 - Can't create/delete/start/stop queue managers etc
- All capabilities restricted to queue managers associated with a specific 9.0.1 CD installation
 - On z/OS all queue managers at 9.0.1 CD level

emey consulting

IBM MQ

MQ Console - log in & add widgets

IBM MQ Console - Login
Please enter your username and password

User Name:

Password:

Login

Add a new widget

Local Queue Managers Manage local queue managers
Chart Monitor your MQ platform

Add a widget to display MQ object information for the specified queue manager

Queue manager:

Queues Configure destinations for message
Topics Administrate topics for assigning messages to topics
Listeners Configure processes to accept network requests
Channels Queue manager communication paths
Client-connection Channels Client connectivity details
Authentication Information Configure authentication mechanisms
Subscriptions Configure how subscriptions to topics are handled
Channel Authentication Records Control access to channels

Close

© Demey Consulting, 2016

Présentation MQ 9.0.1 CD

11

emey consulting

IBM MQ

MQ Console - manage

IBM MQ Console Dashboard

My simple tab - All details tab +

Add widget

Local Queue Managers

Name	Status
qmgr1	Running
qmgr2	Running

Total: 2 Selected: 1 Updated: 12:04:08 PM

Queues on qmgr1

Name	Queue type	Queue depth
SYSTEM.ADMIN.ACCOUNTING...	Local	0
SYSTEM.ADMIN.ACTIVITY.QUEUE	Local	0
SYSTEM.ADMIN.CHANNEL.EVENT	Local	0
SYSTEM.ADMIN.COMMAND.EVE...	Local	0
SYSTEM.ADMIN.COMMAND.QUE...	Local	0
SYSTEM.ADMIN.CONFIG.EVENT	Local	0
SYSTEM.ADMIN.LOGGER.EVENT	Local	0
SYSTEM.ADMIN.PERFUM.EVENT	Local	0
SYSTEM.ADMIN.PUBSUB.EVENT	Local	0
SYSTEM.ADMIN.QMGR.EVENT	Local	1

Total: 57 Selected: 0 Updated: 12:02:21 PM

User CPU time percentage

Channels on qmgr1

Name	Type	Overall channel status
SYSTEM.AUTO.RECEIVER	Receiver	Inactive
SYSTEM.AUTO.SVRCONN	Server-connection	Inactive
SYSTEM.DEF.CLUSRCVR	Cluster-receiver	Inactive
SYSTEM.DEF.CLUSSDR	Cluster-sender	Inactive
SYSTEM.DEF.RECEIVER	Receiver	Inactive
SYSTEM.DEF.REQUESTER	Requester	Inactive
SYSTEM.DEF.SENDER	Sender	Inactive
SYSTEM.DEF.SERVER	Server	Inactive
SYSTEM.DEF.SVRCONN	Server-connection	Inactive

© Demey Consulting, 2016

Présentation MQ 9.0.1 CD

12

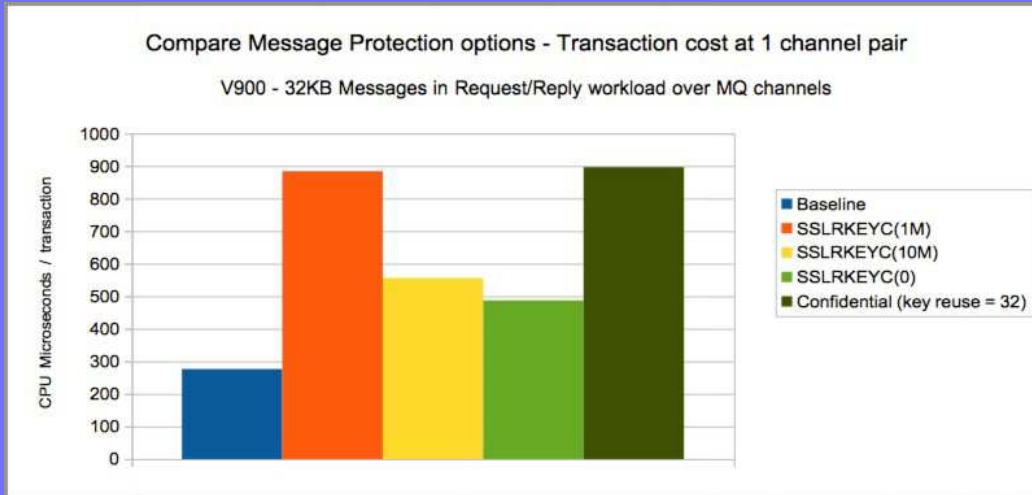
MFT Enhancements

- IBM MQ Managed File Transfer Agent redistributable package
- File Transfer Recovery Timeout

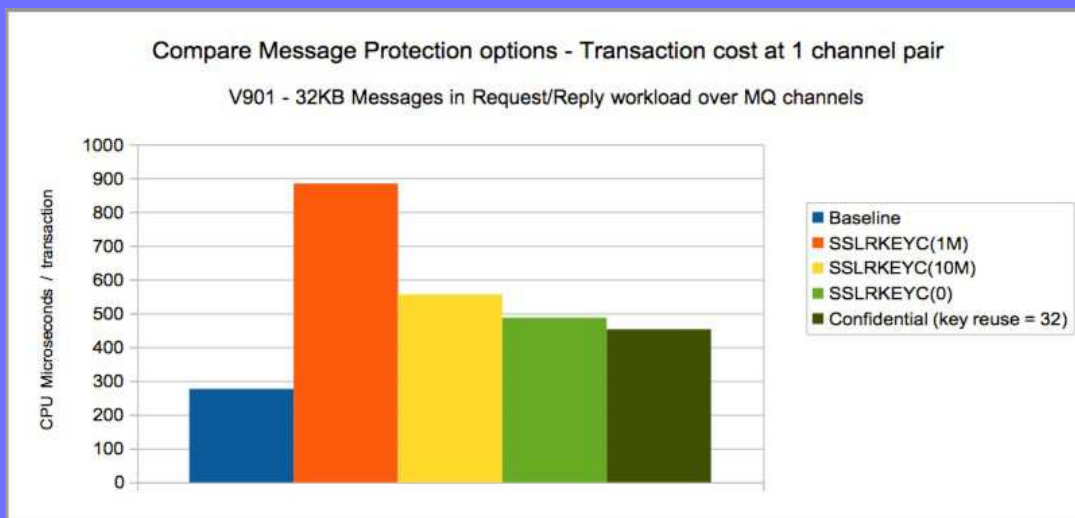
IBM MQ Advanced Message Security – Key points

- Provides additional security to that provided by base MQ
- End-to-end security, message level protection
 - A security policy defines what protection should be applied to messages
 - AMS intercepts messages at “endpoints” and applies the policy
- Asymmetric cryptography used to protect each message
 - Integrity policies prove message origin, content not changed, digitally signed
 - Privacy policies as per integrity plus each message encrypted with unique key
 - **Confidentiality policy** : encryption, but no signing

Comparing SSL with AMS Confidential V9.0.0



Comparing SSL with AMS Confidential V9.0.1



MQdev Blog

<https://www.ibm.com/developerworks/community/blogs/messaging>

- BIteSize Blogging: MQ 9.0.1 - Administrative REST API
- IBM MQ Console on z/OS
- Bitesize Blogging: MQ 9.0.1 - IBM MQ Console Authentication
- IBM MQ for z/OS: V9.0.1 performance improvements for AMS
- IBM MQ Managed File Transfer Agent Re-distributable package
- Connection Authentication & Channel Authentication Record interactions
- What's new for the IBM MQ Console in 9.0.1